

09/09/1999

BB:pr
a99-03:05
Clerk 10/11/99

Introduced By: Brian Derdowski

Proposed No.: 1999-0590

ORDINANCE NO. 13697

1
2
3
4
5
6
7
8
9
10
11
12
13
14
15
16
17
18
19
20
21
22

AN ORDINANCE approving the Fall City Water District
1999 Comprehensive Water System Plan Update.

PREAMBLE:

K.C.C. chapter 13.24 requires approval of comprehensive plans for water utilities as a prerequisite for granting right-of-way franchises and approval of right-of-way construction permits.

The Fall City Water District 1999 Comprehensive Water System Plan Update (plan) discusses water utility service to the district's three thousand existing customers currently living in unincorporated rural King County. The plan also provides water demand forecasts for the next twenty years and includes capital improvement proposals to upgrade the storage and distribution systems.

The King County utilities technical review committee (UTRC) reviewed and conditionally approved the plan on August 11, 1999. The conditions of UTRC approval, technical changes to the plan, have been met and are reflected in the final plan version.

The district prepared a determination of nonsignificance for the plan on June 30, 1998, in accordance with the state Environmental Policy Act.

The district adopted the plan on July 19, 1999.

The UTRC recommends that the council approve the plan.

BE IT ORDAINED BY THE COUNCIL OF KING COUNTY:

23
24
25
26
27
28
29
30
31
32
33
34
35
36
37
38

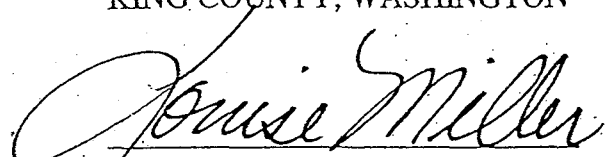
SECTION 1. The Fall City Water District 1999 Comprehensive Water System

Plan Update, Attachment A, is hereby approved without conditions.

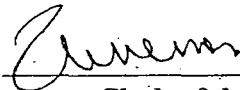
INTRODUCED AND READ for the first time this 15th day of November, 1999.

PASSED by a vote of 13 to 0 this 13th day of December, 1999.

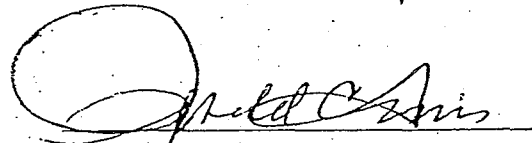
KING COUNTY COUNCIL
KING COUNTY, WASHINGTON


Chair

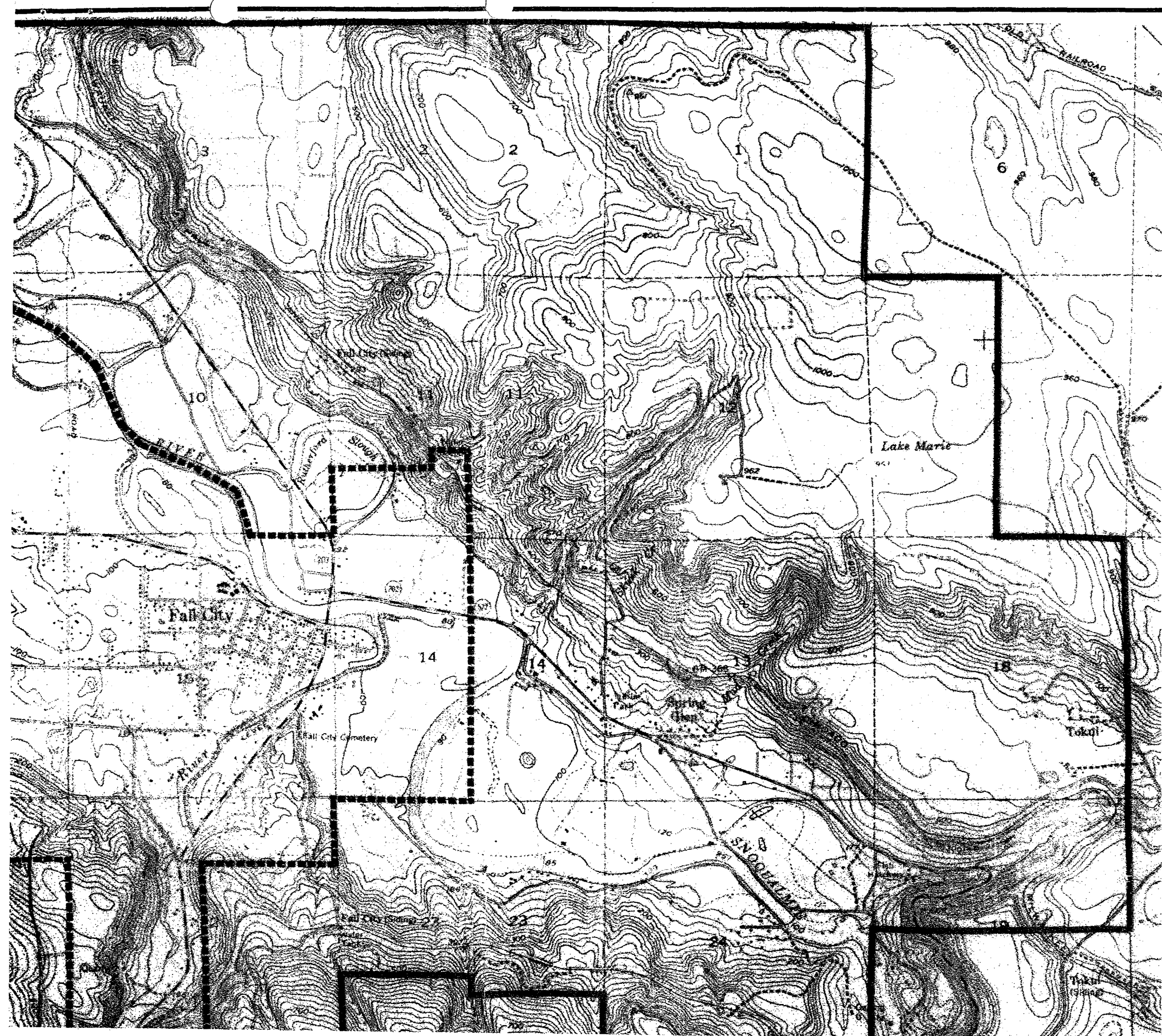
ATTEST:


Clerk of the Council

APPROVED this 16 day of December, 1999


King County Executive

Attachments: A. The Fall City Water District 1999 Comprehensive Water System Plan Update



GRAPHIC SCALE

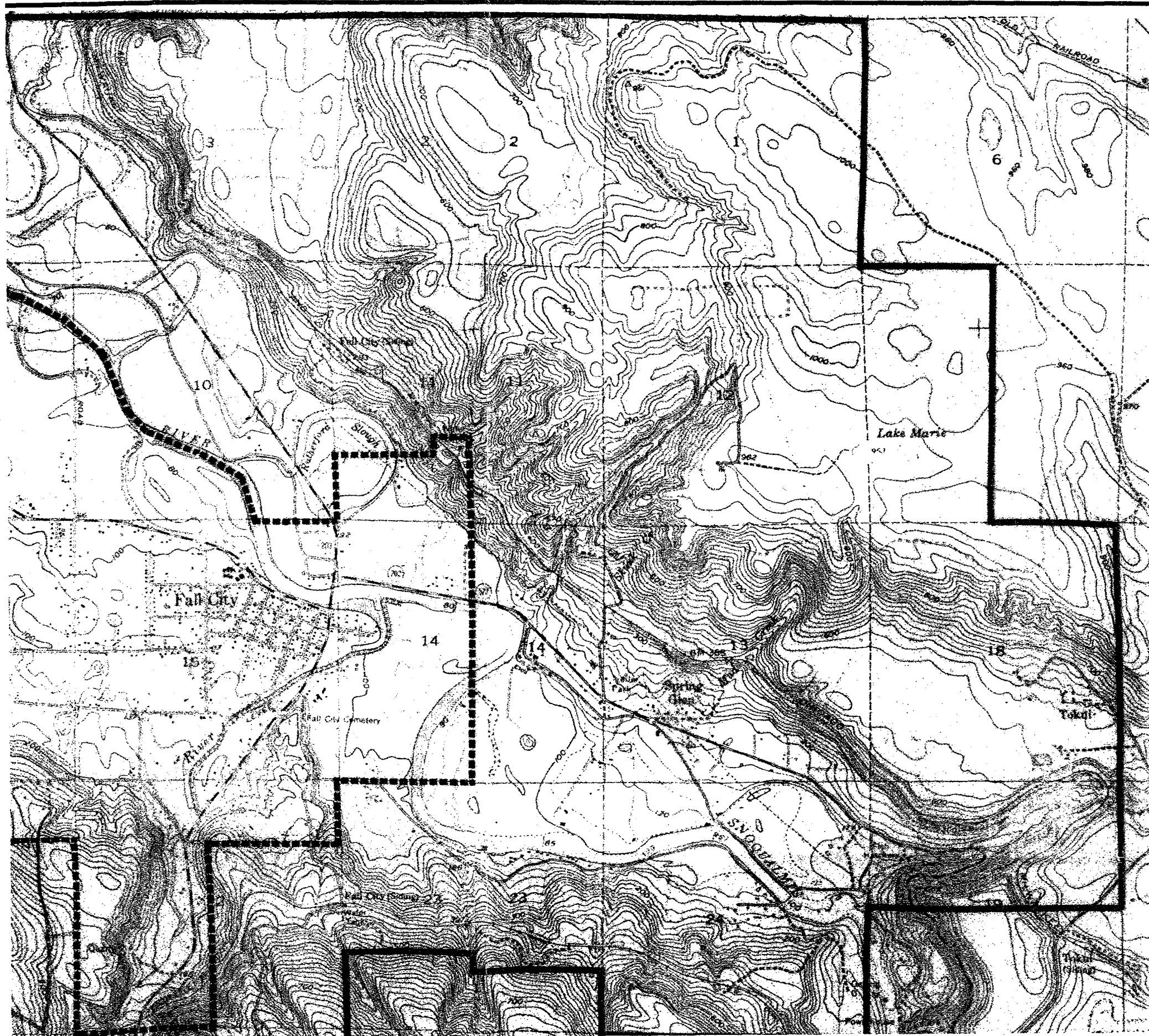


(IN FEET)
1 inch = 2000ft.

LEGEND:

- = DESIGNATED SERVICE AREA BOUNDARY
- = DISTRICT BOUNDARY
- = K.C.W.D. #123 CORPORATE BOUNDARY (PRESTON AREA)

13864



GRAPHIC SCALE



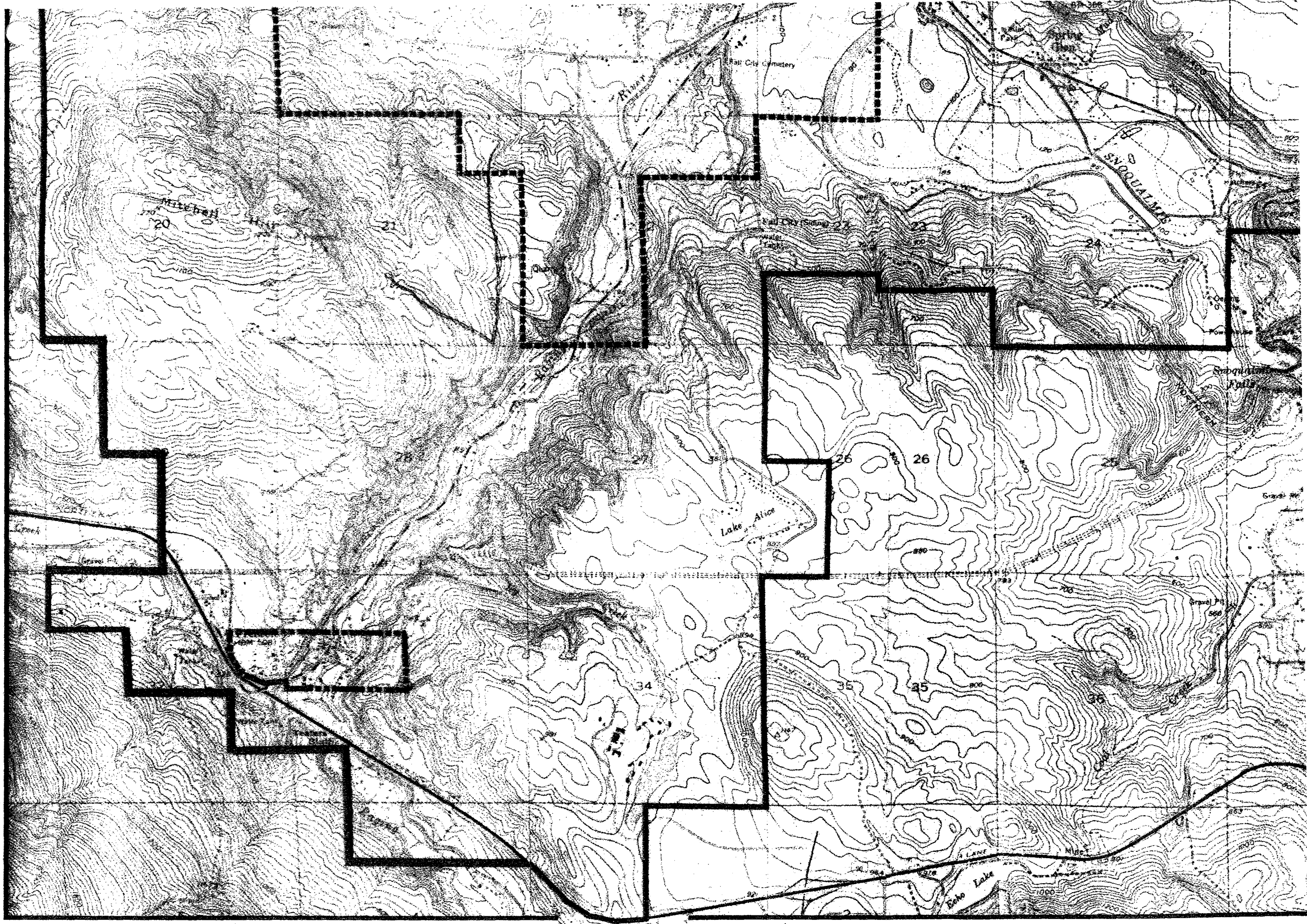
(IN FEET)
1 inch = 2000ft.

LEGEND:

- = DESIGNATED SERVICE AREA BOUNDARY
- = DISTRICT BOUNDARY
- = K.C.W.D. #123 CORPORATE BOUNDARY (PRESTON AREA)

13864

13864



13864

